

Parish Genealogy

Generation 1: John Parish

b. 8 March 1642, New England
m. 1664, **Hannah Jewell**, Braintree, MA
d. 1715, Preston, CT

Generation 2: Samuel Parish

b. 1667, Braintree, MA
m. 1699, **Marcy Madiver**, Ipswich, MA
d. 13 May 1735, Norwich, CT

Generation 3: Nehemiah Parish

b. 12 August 1715, Norwich, CT
m1. 1737, **Ruth Green**, d. 1754
m2. 1758, **Patience Smith**, Canterbury, CT
d. March 1779, Canterbury, CT

Generation 4: Jeremiah Parish

b. 17 Feb 1765, Canterbury, CT
m1. 1788, **Thankful Abbott**, VT, d. 1818
m2. **Sarah Porter**
d. 16 July 1851, **Portville, NY**

Generation 5: Jared Parish

b. 6 September 1792, East Bethel, VT
m. 1814, **Lucy Granger**, d. 1872
d. 26 June 1833, **Hinsdale, NY**

Generation 5: Smith Parish I

b. 29 October 1804, Stockbridge, VT
m1. 1834, **Catherine Wales**, d. 1849
m2. 1850, **Lavinia Howe**
d. 23 July 1887, **Portville, NY**

Generation 6: John G. Parish

b. 12 March 1830
m. 1861, **Sarah Holcomb**
d. 29 February 1912, **Portville, NY**

Generation 6: David L. Parish

b. 19 April 1836, **Portville, NY**
m. 1867, **Mary Ruth Thomas**, d. 1937
d. 24 September 1896, **Portville, NY**

Generation 7: Hattie Parish

b. 10 July 1862, **Portville, NY**
m. **Earl Marsh**, (1857-1905)
d. 3 November 1943, **Portville, NY**

Generation 7: Smith Parish II

b. 14 June 1868, **Portville, NY**
m. 1893, **Fanny Bell**, (1870-1967)
d. 15 January 1943, **Portville, NY**

Generation 8: "Dutch" Marsh

b. 21 January 1890, **Portville, NY**
m. 1912, **Lucy Isabel Page**, (1889-1992)
d. 23 April 1975, **Portville, NY**

Generation 8: Earl Parish

b. 26 November 1910, **Portville, NY**
m. 1935, **Josephine Powers**, (1910-2005)
d. 7 February 2008, **Natick, MA**
Ch: **David Parish**

Generation 9: Vivian J. Marsh

b. 13 Jan 1914, **Portville, NY**
m. 19, **Kenneth Marsh**, (d. 2000)
d. 1 August 2009, **Frederick, MD**
Ch: **Nora, Mike, Mary Lee Marsh**

Generation 9: Ione Marsh

b. 5 May 1917, **Portville, NY**
m. **Fairbanks**,
d. 3 December 2007, **Portville, NY**
Ch: **Robert and Timothy Fairbanks**

Parish Genealogy

Generation 1: John Parish

b. 8 March 1642, New England
m. 1664, **Hannah Jewell**, Braintree, MA
d. 1715, Preston, CT

Generation 2: Samuel Parish

b. 1667, Braintree, MA
m. 1699, **Marcy Madiver**, Ipswich, MA
d. 13 May 1735, Norwich, CT

Generation 3: Nehemiah Parish

b. 12 August 1715, Norwich, CT
m1. 1737, **Ruth Green**, d. 1754
m2. 1758, **Patience Smith**, Canterbury, CT
d. March 1779, Canterbury, CT

Generation 4: Jeremiah Parish

b. 17 Feb 1765, Canterbury, CT
m1. 1788, **Thankful Abbott**, VT, d. 1818
m2. **Sarah Porter**
d. 16 July 1851, **Portville, NY**

Generation 5: Jared Parish

b. 6 September 1792, East Bethel, VT
m. 1814, **Lucy Granger**, d. 1872
d. 26 June 1833, **Hinsdale, NY**

Generation 5: Smith Parish I

b. 29 October 1804, Stockbridge, VT
m1. 1834, **Catherine Wales**, d. 1849
m2. 1850, **Lavinia Howe**
d. 23 July 1887, **Portville, NY**

Generation 6: Lester Parish

b. 6 August 1819
m1. **Laura Knapp** m2. **Martha Dennis**
d. 25 January 1867, **Eldred, NY**

Generation 6: Julius Parish

b. 16 July 1822
m. 1857, **Sally Torrens**
d. 1 August 1909

Generation 6: John G. Parish

b. 12 March 1830
m. 1861, **Sarah Holcomb**
d. 29 February 1912, **Portville, NY**

Parish History

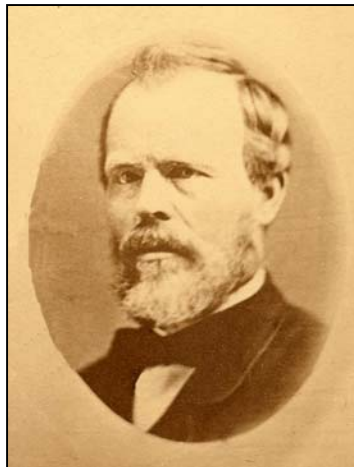


SMITH PARISH I
(1804 – 1887)

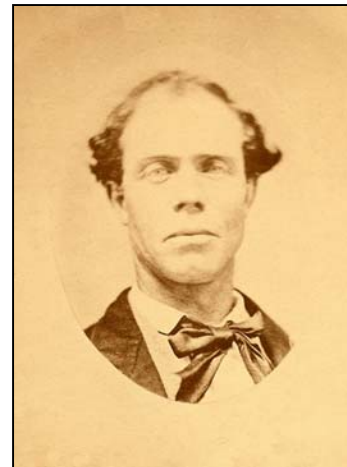
THE THREE SONS OF SMITH PARISH'S BROTHER,
JARED PARISH
(1792 – 1833)



LESTER PARISH
(1819 – 1867)
Lived in Eldred



JULIUS PARISH
(1822 – 1909)
Photographer and Supt. Of
Common Schools for Town
of Portville 1850's



JOHN G. PARISH
(1830 – 1912)
Worked for Mersereau Mill
Ancestor of
Marsh/Fairbanks

Smith Parish Home



DAVID LATHROP PARISH
(1836 – 1896)
Eldest Son of Smith and
Catherine Wales Parish



LAVINIA PARISH
(1846 – 1899)
Daughter of Smith and
Catherine Wales Parish



SMITH PARISH
(1868 – 1943)
Grandson of Smith and
Catherine Wales Parish

Family of Smith and Fanny Parish



Left to Right: Ruth Frances Parish (Scutt), David Watson Parish, Fanny Bell Parish, Mary Isabel Parish, Robert Bell Parish, Smith Parish, Earl Thomas Parish c. 1915



Back: Wm. Holden, Nellie Holden (Craft), Henrietta Holden, Fanny Parish, Alice Holden.
2nd Row: Susan Holden Wright, Mrs. Ruth Wheeler Bell (Fanny's mother), Susan Baker Toomer, Henrietta Toomer Holden, Mrs. Lowrey. Front Row: Frank H. Wright, Frances H. Wright (McMurray), Dorothy A. Wright, Robert Parish, Ruth Parish, Smith Parish, and C. K. Wright was 3 mos. old (not shown). c. 1900, Riverhurst Park

The Powers Family



Earl and Jo's PHS Graduation Class

Parish Brothers



September 1967 - 75th Anniversary of Parish Hardware: Earl, Robert, David



Earl and Jo Parish



Madaline Marshall Parish (1904-1993)
wife of David Parish

Earl T. Parish (1910 – 2008)

Josephine Powers Parish (1910 - 2005)



EULOGY by David Parish (April 5, 2008)

My father had a few great loves in his life. He loved his wife and family; he loved his friends; and, he loved his town. He had a utopian vision of a small village on the banks of the Allegany River, cared for by caring people.

Because people needed a place to be born and to be cured, he supported the local hospitals. Because they needed a good education, he joined the school board. To serve the government, he became Town Clerk. His work with the YMCA helped address some of the physical needs. His service to the church was focused on the spiritual; his work with the Bank was focused on the temporal. His work with the Library helped secure a resource for life-long learning, and as a founding member of the Historical Society, he hoped people would remember and value the past. And, his years of service to the Chestnut Hill Cemetery provided a final resting place of serenity and beauty.

Until his last days, my father wished well for his family, his friends and his community. It was a life well-spent. And, if his life proved anything, it proved that there is a place for a gentle man in a not always gentle world.

Smith Parish Hardware



Smith Parish Hardware



Smith Parish, on the right, and from the left are his grandson, Donald, and sons, Robert and David.



John Little ran the store from 1978 to 1982.

Family of John G. Parish



Parish's Millgrove Home: John G., Sarah, and daughters, Hattie and Belle (and dog).



Mersereau Mill 1895



John G. Parish near the saw blade.



Sarah Holcomb Parish with her brother, Charles Holcomb, at 174 S. Main Street.

Ione Marsh Fairbanks
1917 – 2007
Her Life Remembered
Saturday, April 26, 2008

PORTVILLE—An attractive home wedding was solemnized this morning at eleven o'clock at the residence of Mr. and Mrs. Caryl O. Marsh on Temple Street, when their daughter, Ione, became the bride of Robert D. Fairbanks, son of Mr. and Mrs. John E. Fairbanks of North Twenty-Fourth Street, Olean. The Rev. George F. Loehr, pastor of the Presbyterian Church, united the couple in marriage in the presence of the immediate families. *Oct 5, 1948*

A two-tone gray wool gown was the choice of the bride for this occasion and with this she selected soldier blue accessories and wore a corsage of pale pink rose buds and gardenias.

Mrs. Kenneth Marsh of Olean was matron of honor for her sister and she was attired in a navy blue silk suit with accessories in soldier blue. Her flowers were a corsage of pale pink rose buds.

Charles F. Fairbanks, also of Olean, was his brother's attendant.

The bride's mother, Mrs. Marsh, wore a gown of black wool crepe with blending accessories and her corsage was of Talisman rose buds and babies breath.

Mrs. Fairbanks, the bridegroom's mother, was also attired in black silk crepe with corresponding accessories and her corsage, also, was of Talisman rose buds and babies breath.

Breakfast was served at the Cogswell, where a profusion of autumn leaves and pom pons formed the table decorations. Covers were marked for sixteen guests.

Mr. and Mrs. Fairbanks are on a brief wedding trip and later will return to this place to reside at 40½ Temple Street.

Pre-nuptial events in compliment to Mrs. Fairbanks included: Announcement tea, Mrs. Kenneth Marsh, Olean, and Mrs. Caryl O. Marsh, Portville; towel shower, Mrs. R. C. Bartle; luncheon and shower, Mrs. Harold Kaster, Bradford; variety shower, Mrs. James Bracy; variety shower and dinner, Mrs. Joseph Charles, Eldred, and Mrs. H. B. Hitchcock, Bolivar.

The bride is a former student of Portville High School. Mr. Fairbanks attended Olean High School and is employed in the Service Department of the Niagara-Hudson Company, Olean office.

Among the guests were Mr. and Mrs. John E. Fairbanks, Charles F. Fairbanks, Mrs. Charlotte Hurd, Miss Martha Hurd, Mr. and Mrs. Kenneth Marsh, Olean, and Miss Hazel Fairbanks, Buffalo.

